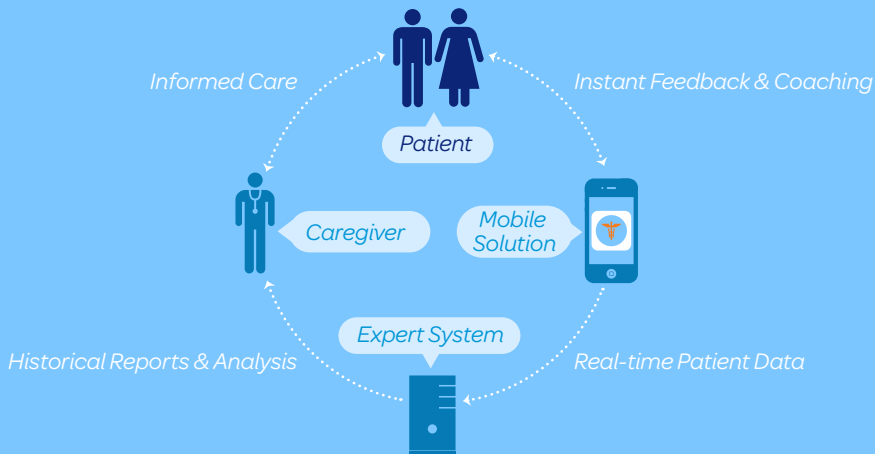




AT&T mHealth Solutions Presents DiabetesManager®



End-to-end mHealth enterprise solution combines the DiabetesManager application with AT&T's highly secure hosting environment, support and customer care-enabling AT&T and its customers to comply with all applicable HIPAA requirements.

26 Million

v
Americans with diabetes 2010

79 Million

v
Americans with prediabetes 2010

\$194 Billion

v
Total US healthcare spend in 2010

39 Million

v
Americans with diabetes projected in 2020

96 Million

v
Americans with prediabetes projected in 2020

\$500 Billion

v
Total estimated US healthcare spend in 2020

\$3.40 Trillion

Estimated total US spend on diabetes-related care over the next decade