



802.11g PC Card Wireless Adapter

Installation Guide

Notice to Users

©2004 2Wire, Inc. All rights reserved. This manual in whole or in part, may not be reproduced, translated, or reduced to any machine-readable form without prior written approval.

2WIRE PROVIDES NO WARRANTY WITH REGARD TO THIS MANUAL, THE SOFTWARE, OR OTHER INFORMATION CONTAINED HEREIN AND HEREBY EXPRESSLY DISCLAIMS ANY IMPLIED WARRANTIES OF MERCHANTABILITY OR FITNESS FOR ANY PARTICULAR PURPOSE WITH REGARD TO THIS MANUAL, THE SOFTWARE, OR SUCH OTHER INFORMATION, IN NO EVENT SHALL 2WIRE, INC. BE LIABLE FOR ANY INCIDENTAL, CONSEQUENTIAL, OR SPECIAL DAMAGES, WHETHER BASED ON TORT, CONTRACT, OR OTHERWISE, ARISING OUT OF OR IN CONNECTION WITH THIS MANUAL, THE SOFTWARE, OR OTHER INFORMATION CONTAINED HEREIN OR THE USE THEREOF.

2Wire, Inc. reserves the right to make any modification to this manual or the information contained herein at any time without notice. The software described herein is governed by the terms of a separate user license agreement.

2Wire, and the 2Wire logo are registered trademarks of 2Wire, Inc. All other trademarks are trademarks of their respective owners.

2Wire 802.11g PC Card Wireless Adapter

2Wire's 802.11g PC Card Wireless Adapter is a wireless network card that fits into any standard PC Card Type II slot. Using this adapter gives you the same connectivity as Ethernet without the wires. Expanding or redesigning your network is easy, and unlike cabled Ethernet, the 2Wire 802.11g PC Card Wireless Adapter allows you to roam throughout the network while remaining connected to the LAN.

Follow these steps to complete the adapter installation:

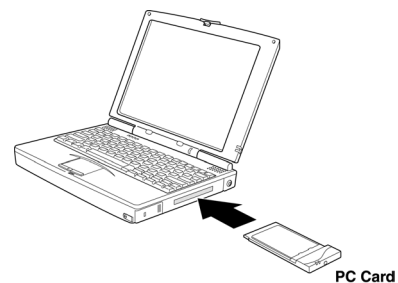
Step 1 - Install the 2Wire 802.11g PC Card Wireless Adapter.

Step 2 - Install the adapter driver from the Wireless Client Setup CD.

The following sections give you detailed instructions for completing each step.

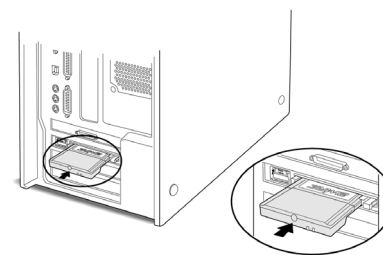
STEP 1: Install the 2Wire 802.11g PC Card Wireless Adapter

To install the 2Wire 802.11g PC Card Wireless Adapter in your laptop, turn off your computer and simply insert the card into the PC Card slot.



If you have a desktop computer, you need to have an Internal Wireless Adapter with a PC Card Type II slot installed to insert the card.

Follow the driver installation instructions appropriate to your operating system to complete your 2Wire 802.11g PC Card Wireless Adapter installation.



STEP 2: Install the 2Wire 802.11g PC Card Wireless Adapter Driver

Installing Drivers For Windows XP

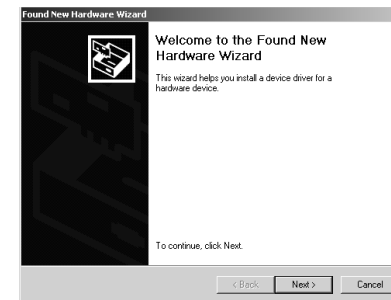
1. Power on your computer. Insert the Wireless Client Setup CD into your CD-ROM drive.
2. When the Found New Hardware Wizard window opens, select **Install the software automatically (Recommended)** and click **Next** to continue.
3. The drivers are installed.



4. When the Completing the Found New Hardware Wizard opens, click **Finish**. Your installation is complete.
5. ***Continue to Appendix A on page 11 to configure the adapter to work with your 2Wire gateway.***

Installing Drivers For Windows 2000

1. Power on your computer. Insert the Wireless Client Setup CD into your CD-ROM drive.
2. When the Found New Hardware Wizard window opens, click **Next** to continue.



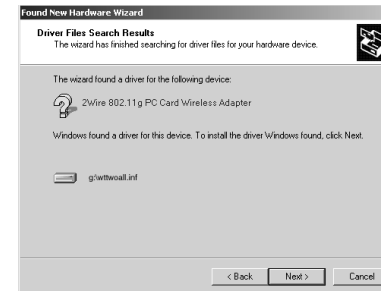
3. The next window prompts you to install device drivers. Select **Search for a suitable driver for my device (recommended)**, and click **Next**.

4. When the Locate Driver Files window opens, deselect the **Floppy disk drives** checkbox, select the **CD-ROM** checkbox, and click **Next**.



5. When the Driver Files Search Results window opens, click **Next**.

6. When the Completing the Found New Hardware Wizard opens, click **Finish**. Your installation is complete.
7. ***Continue to Appendix A on page 11 to configure the adapter to work with your 2Wire gateway.***



Installing Drivers For Windows ME

1. Power on your computer. Insert the Wireless Client Setup CD into your CD-ROM drive.
2. When the Add New Hardware Wizard window opens, select **Automatic search for a better driver (Recommended)**, and click **Next**.
3. After the driver files are copied, click **Finish**.



4. If the System Settings Change window opens, click **Yes** to restart your computer. Your installation is complete.
5. ***Continue to Appendix A on page 11 to configure the adapter to work with your 2Wire gateway.***

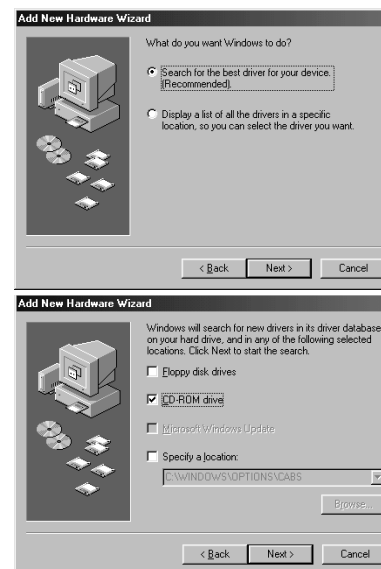
Installing Drivers For Windows 98 SE

1. Power on your computer. Insert the Wireless Client Setup CD into the CD-ROM drive.
2. When the Add New Hardware Wizard opens, click **Next** to continue.



3. When the next window opens, select **Search for the best driver for your device (Recommended)**, and click **Next**.

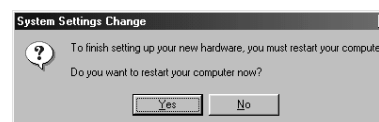
4. Uncheck **Floppy disk drives**, select the **CD-ROM drive** checkbox, and click **Next**.



5. Windows locates the best driver for your device. Click **Next** to continue.

6. After the drivers are copied, click **Finish**.

7. If the System Settings Change window opens, click **Yes** to restart your computer. Your installation is complete.
8. ***Continue to Appendix A on page 11 to configure the adapter to work with your 2Wire gateway.***



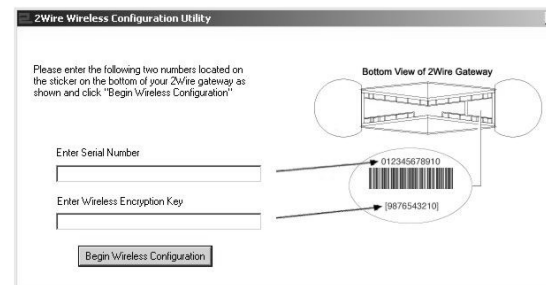
Appendix A: Wireless Adapter Configuration

Now that you have installed the drivers for your wireless adapter, you must configure it to work with the 2Wire gateway. A wireless network requires a network name (SSID) and an encryption key to operate. *Every 2Wire wireless gateway comes with a unique network name and encryption key printed on the bottom of the unit.*

1. With the 2Wire Adapter Setup CD in your CD-ROM drive, click **Run** from the Windows **Start** button. Enter `D:\setup.exe` in the **Open** field enter and click **OK**.

If your CD-ROM drive is not located on D;, substitute the appropriate letter (for example, E:\setup.exe).

2. When the Driver and Utilities program page displays, click the **Configure 2Wire Wireless Adapter** button.
3. Enter the serial number and encryption key from your 2Wire wireless gateway, then click the **Begin Wireless Configuration** button to configure your adapter.

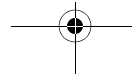
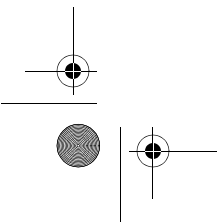
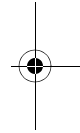
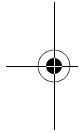
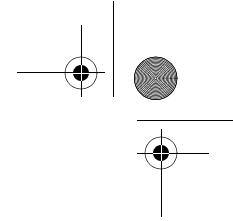
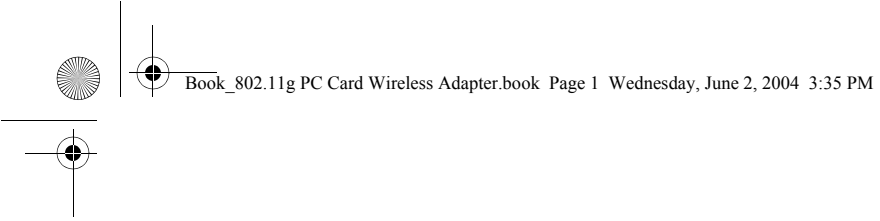


Regulatory Information

FCC Statement

This device has been tested and complies with the specifications for a Class B digital device, pursuant to Part 15 of the FCC rules. These rules are designed to provide reasonable protection against harmful interference in a residential installation. This equipment generates, uses, and can radiate radio frequency energy and, if not installed and used according to the instructions, may cause harmful interference to radio communications. However, there is no guarantee that interference will not occur in a particular installation. If this equipment does cause harmful interference to radio or television reception, which is found by turning the equipment off and on, the user is encouraged to try to correct the interference by one or more of the following measures:

- Reorient or relocate the receiving antenna.
- Increase the separation between the equipment and the receiver.
- Connect the equipment into an outlet on a circuit different from that to which the receiver is connected.
- Consult the dealer or an experienced radio/TV technician for help.



5100-000244-000 Rev B

