

# Getting Started Guide

Cingular® 3125



 **cingular**  
raising the bar. 

CINGULAR MAKES BUSINESS RUN BETTER

<b>Welcome to Cingular</b>	<b>2</b>
What's in the Box?	2
Get To Know Your Cingular 3125	3
<b>Set Up Your Cingular 3125</b>	<b>4</b>
Insert Battery	4
Make a Phone Call	5
Set Up Voicemail	6
Type Information	7
Send a Text Message	10
<b>Get Started Using the Cingular 3125</b>	<b>11</b>
Browse the Web	11
Set Up Email on Your Phone	13
Take a Picture, Send It To a Friend	24
Sync Contacts, Calendar, Email and More (Optional)	25
Play a Song	27
<b>FAQ</b>	<b>29</b>
<b>Tips and Tricks</b>	<b>31</b>



## What's in the Box?

Thank you for purchasing the Cingular 3125.

To get started, we recommend the following:

- Carefully follow the step-by-step instructions below to set up your Cingular 3125.
- Review the User Manual on the Getting Started CD to learn the full power of what you can do with the Cingular 3125.

Right now, make sure the following components are included in the box:



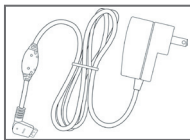
**Cingular 3125**



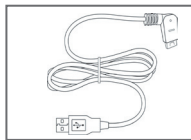
**Getting Started Guide**



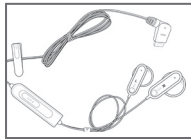
**Getting Started CD**  
Includes Microsoft ActiveSync, User Manual and Warranty Information for your Cingular 3125.



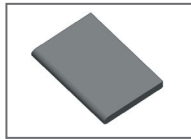
**AC charger**



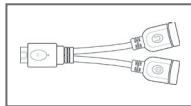
**USB Sync cable**



**Headset**



**Rechargeable battery**



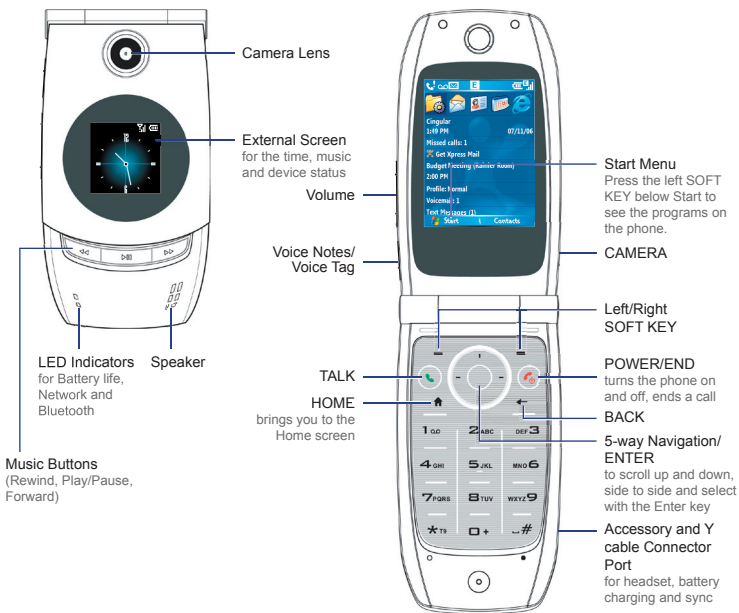
**Y cable**

For simultaneous use of headset and charger.

The Cingular 3125 will hold a microSD card, which is not included in the box. You will want one to load more than a few songs from your PC to the phone.

## Get To Know Your Cingular 3125

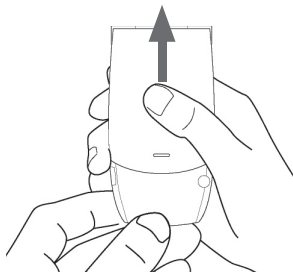
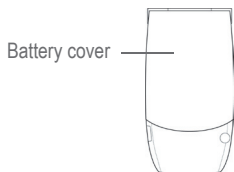
Your Cingular 3125 is a powerful wireless device. It does much more than you would expect from a phone, including access to your work and personal email/contacts/calendar and a rich multi-media experience. Get to know your phone so that you can easily walk through the next steps.



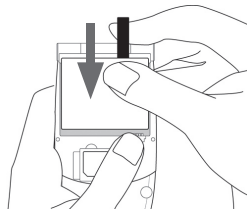



## Insert Battery

1. Open the battery cover. Hold the phone in one hand with the front panel facing down. With your other hand press down on the battery cover and slide it open.



2. Insert the battery so that the connectors on the battery align with the connectors on your Cingular 3125.
3. Replace the battery cover.



 **Warning:** Use only the battery that specifies for use with your Cingular 3125. See the Battery Information section on the User Manual PDF for more information about using the battery safely.

Steps?  
3

Takes?  
3 minutes

**Note**  
Your battery comes partially charged. To find out how to charge your device refer to the 'Charge the battery' section of your User Manual on the Getting Started CD.

Steps?

3

Takes?

3 minutes

## Make a Phone Call

To connect to the wireless network successfully, your Cingular 3125 must be powered on, your wireless service must be active, and you must be in a coverage area. On the top right corner of the Home screen, you will find the network coverage indicator.

### Wireless Network Coverage Indicator



Full wireless coverage






Full wireless coverage using GPRS




No wireless coverage



Wireless is turned off

1. On the Home screen, access the Phone screen by pressing the TALK button (  ) or directly pressing numeric keys on the keypad.
2. When you enter the phone number completely, press the TALK button (  ).
3. To end the call, press the END button (  ).

Note: The built-in speakerphone of Cingular 3125 allows you to talk hands-free or lets other people listen to the conversation.

- To turn the speakerphone on during a call, click **Menu > Speakerphone On**.
- The speakerphone icon (  ) appears at the top of the screen.
- To turn off the Speakerphone, click **Menu > Speakerphone Off**.



## Set Up Voicemail

Press and hold the **1** key on your Cingular 3125. You will be connected to the voicemail system, which will then ask you to:

1. Create your password.
2. Record your name.
3. Record a greeting.

## Check Your Voice Mail Messages From Your Cingular 3125

1. Press and hold the **1** key.
2. Follow the voice prompts.

Press and hold  
the **1** key



Note: You can check your voicemail messages from other phones.

- For all locations except Puerto Rico: Dial your 10-digit wireless number and press the **\*T9** key when you hear your personal greeting. Then, enter your personal passcode and follow the voice prompts.
- For users in Puerto Rico: Dial your 10-digit wireless number and press the **#** key when you hear your personal greeting. Then, enter your personal passcode and follow the voice prompts.

Steps?  
3

Takes?  
2 minutes

Steps?

2

Takes?

1 minute

#### Note

With multipress, you press the key multiple times and each number on the key will appear in order.

## Type Information

This information will be useful when entering a text message or email. You can enter text, numbers and symbols by using the keypad. The phone supports three input modes for entering text and numbers: **Multipress**, **T9 Text Input**, and **Numeric**. Multipress and T9 Text Input modes are used for entering text and numbers, and Numeric mode is used for entering numbers only.

When you are in a screen to enter text or numbers, the indicator on the top right corner of the display screen shows the input mode that you are currently using.



Input mode indicator

- abc** Multipress text input mode, lowercase
- Abc** Multipress text input mode, uppercase
- ABC** Multipress text input mode, caps lock
- t9** T9 text input mode, lowercase
- T9** T9 text input mode, uppercase
- T9** T9 text input mode, caps lock
- 123** Numeric input mode





## Change the Input Mode

1. Press and hold the **\* T9** key.
2. On the menu, click the input mode you want.

## Use MultiPress

Press the key once or several times to enter the letter(s) you want.

For example, press the 2 key three times to enter the letter C.

- 0 enters + or zero.
- 1 enters different symbols.
- # enters a space.

## Use T9 Input Mode

Type quickly using T9 Text Input. To form a word in T9 mode, press the numeric keys that contain the letters you want. As you enter letters, T9 analyses your key presses and attempts to complete the word.

1. Press and hold the **\* T9** key to select **T9** input mode.
2. Enter letters by pressing the keys on which the letters appear. Press a key only once for each letter. If there is more than one choice in the T9 dictionary for your entry, a list of available words is displayed.

Steps?

2


Takes?

1 minute



For example, to enter the word “shoe”, press **7, 4, 6, 3**.

If you do not see the desired word, click **Add Word?** from the list, and then enter the word using Multipress.

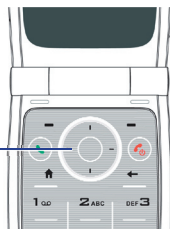
3. Press the  key to enter a space after the word as entered, or click one of the available words and the space is added automatically.
4. To enter punctuation, press **1**, and select from a list of common punctuation marks. You can practice this by sending a text message in the next section.



## Send a Text Message

1. On the Home screen, click **Start > Messaging**.
2. Scroll to **Text Messages**. Then, click **Select**.
3. Click **New**.
4. Enter the wireless phone number of one or more recipients, separating them with a semicolon (;). Press the NAVIGATION pad to move to the message section.

Navigation pad



5. Enter your message using T9.

Check that a T9 is displayed in the top right of your screen. If not, press the **\* T9** key until it appears.

Enter this sentence:

The quick brown fox jumps over the lazy dog

843#78425#27696#369#58677#6837#843#5299 (scroll down to select lazy) #3641

When completed, click **Send** (or prese the HOME button if you don't want to send).

Steps?

5

Takes?

2 minutes

Tip

Refer to Type Information on how to enter text.

# Get Started Using the Cingular 3125

Steps?

4

Takes?

2 minutes

## Browse the Web

Internet Explorer is a full-featured Internet browser, optimized for use on your Cingular 3125.



Internet Explorer

## Open Internet Explorer

1. On the Home screen, click **Start > Internet Explorer**.
2. Once the browser loads you will see your Favorites. To go to a new web site, click **Menu > Address Bar**.
3. Type a web address, e.g. [www.cingular.com](http://www.cingular.com)  
Note: To insert a period, press the **1** key.  
To insert a slash mark (/), press and hold the **\*T9** key to select **Symbols**, and then select '/' from the Symbols list.
4. Click **Go**, press any key if the screen goes dark while downloading.

### Note

Not all web sites are designed for browsing on a mobile device and may not look or function in the same way as they would on a computer.



## Go to a Link

1. While on a Web page, scroll vertically or horizontally to see all available links.
2. Press ENTER key to select the link.

## MEdia Net from Cingular

MEdia Net, only from Cingular, brings your favorite web pages, downloads and more to your wireless phone.

1. From the Home screen, click **Start > Internet Explorer**.
2. Select MEdia Net.
3. Personalize your home page exactly the way you want it.
4. Click on **EDIT** or **Customize MEdia Net** to make changes.

Steps?

2

Takes?

1 minute

### Note

When you're looking for information on the Web, checking Web sites and information is easy and quick from your Cingular 3125.

Steps?

5

Takes?

10 minutes

#### Note

Some personal email services require a premium subscription to access email from a mobile device. If you complete this setup process and your email does not start arriving on your device, check with your email provider to validate eligibility.

## Set Up Email on Your Phone

### Choose an Email Setup Option

Your smartphone can connect to:

- **Personal email** accounts such as Yahoo! Premium, AOL or Comcast. To set up a Personal email account, go to the Microsoft Outlook Mobile section.
- **Corporate email** accounts (such as Microsoft Exchange or Lotus Notes). To set up your corporate account, go to the Corporate Email Setup on the next page.

### Microsoft Outlook Mobile

With Outlook Mobile, you can access a POP3/IMAP4 email account that you have with an Internet service provider (ISP). To start, have your email address and password.

1. On the Home screen, click **Start > Messaging** and click Outlook E-mail on the Messaging screen.
2. Click **Menu > Options > New Account**.
3. In **Your name**, enter your display name for email messages.
4. In **E-mail address**, enter the email address for this account.
5. Select **Attempt to obtain e-mail settings from the Internet** and click **Next**.

**Auto Setup** attempts to download necessary email server settings so that you do not need to enter them manually. If the account is set up successfully, you will be able to follow the prompts on the next screens.



You will be asked for your password and the server information will be populated by the information received by your email provider.

If the Auto Setup is not successful, you will need to enter your email settings manually. Here is what you'll need:

- Email user name
- Email password
- Incoming mail server - this is available from your ISP

Go through the screens and enter this information

Email user name	
Email Password	
Domain	Not necessary except for Microsoft Exchange server
Account Type / Server Type	POP3
Account Name	your choice
Network	The Internet
Incoming mail server	Available from your ISP
Requires SSL	leave unchecked
Outgoing Mail Server	cwmx.com
Outgoing email server requires authentication	leave unchecked

Go through the screens to manually set up your email.

Steps?

14

Takes?

10 minutes

## Corporate Email Setup

A corporate email account (such as Microsoft Exchange or Lotus Notes) is an account managed by a company's IT organization.

There are two ways to access your corporate email on your Cingular 3125:

- Self Service - Xpress Mail is a self service option for accessing your corporate email from your Cingular 3125 without support from IT.
- IT Managed - Good Mobile Messaging and Microsoft Direct Push require that your IT organization install software centrally and provide you access. Flip to page 23 of this guide for IT Managed corporate email.

## Self Service Xpress Mail Corporate Email Setup for Cingular 3125

Xpress Mail can provide wireless access to your corporate email from your Smartphone without support from IT.

To set up Xpress Mail, you will need:

- Work email address
- The type of mail server your company runs (Microsoft Exchange, Lotus Notes, or IMAP)
- The computer you use to access your corporate email (must be connected to the Internet)





To start on your desktop PC or laptop:

1. Open an Internet browser to <http://xpressmailpe.cingular.com> and click the **Register Now** link to create an account.

**Cingular Xpress Mail™ Personal Edition**

Please enter your user name and password.  
Passwords are case sensitive, while user names are not.

**Don't have an account?**  
[Register now >>](#)

[Need more information?](#)  
[Learn more >>](#)

**Cingular Xpress Mail**  
User Name

**Cingular Xpress Mail**  
Password

[Bookmark this page for easy access!](#)

Login

2. On the Registration screen you will need to fill in all the required fields. You will need to create an Xpress Mail User Name and Password for your account which you will need later in the process. Click on **Next** to continue.

**Cingular Xpress Mail™ Personal Edition**

This service provides you with secure, real-time wireless access to your corporate email, calendar, contacts and documents from your Cingular Phone, PDA or PC internet browser.

Create an account by completing the form on this page and clicking save. Then follow the instructions on each page.

**TIP:** The [Cingular Xpress Mail Quick Start Guide](#) can help you get started.

\* Required fields

\* Cingular Xpress Mail User Name

\* Email

\* Cingular Xpress Mail Password

\* Confirm Password

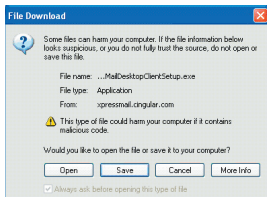
\* First Name

\* Last Name

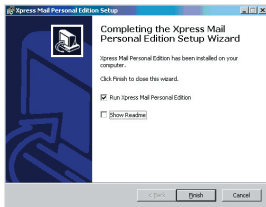
\* Company Name

3. After creating your Xpress Mail User Name and Password you will need to download the Xpress Mail desktop software on your Desktop PC or Laptop. Click **Download** to continue.

- When the File Download screen appears click on **Open**.

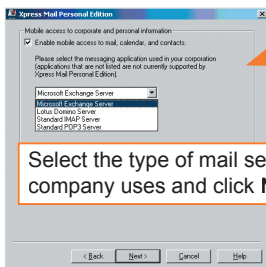


- After the install completes click on **Yes** to install Xpress Mail Personal Edition.
- On the Welcome to the Xpress Mail Personal Edition Setup Wizard click **Next**.
- Click **I Agree** to accept the license agreement.
- Select **Default** and click **Next**.
- Click **Install**.
- De-select **Show Readme** option, leave the **Run Xpress Mail Personal Edition** checked and click **Finish**.

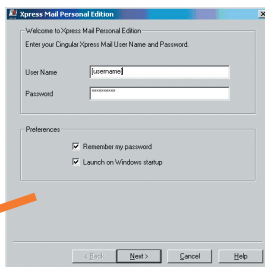




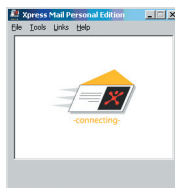
11. Enter your **Xpress Mail User Name and Password** you created when registering for Xpress Mail on the web (step 2 above) and click **Next**.



Select the type of mail server your company uses and click **Next**.

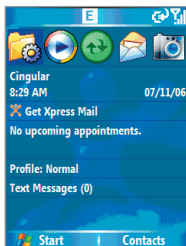


12. Leave the document access checkbox checked if you want access to files on your computer from your 3125 and click **Finish**.
13. You will see the dialog box below while Xpress Mail connects to your corporate mail account.
14. When Xpress Mail has successfully connected to your corporate email account, the Xpress Mail dialog will minimize to the System Tray.

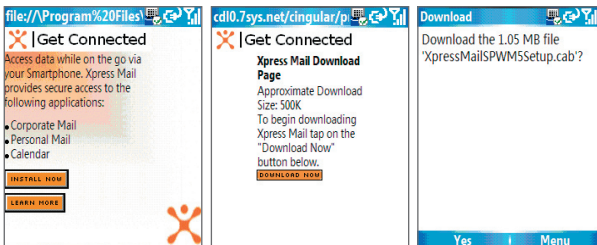


To complete the setup process on your 3125

1. Click on the **Get Xpress Mail** link on the home screen of your device.

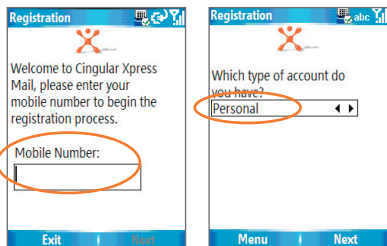


2. Click on **Install Now** and then on the **Download Now** button.

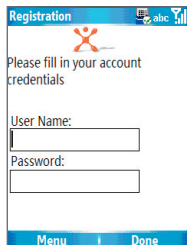




3. Open Xpress Mail, enter your wireless number and then select **Next**.
4. Select **Personal Edition** and select **Next**.



5. Enter the Xpress Mail user name and password designated in Step 2 of the web registration process and ensure the **Xpress Mail Desktop Software** is running and click **Done** to complete the registration process.

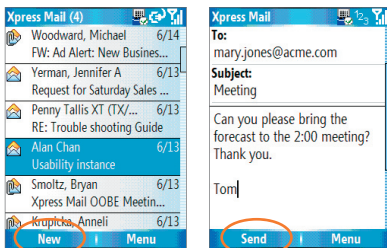


To send and receive email

1. On the Home Screen click on **Start > Messaging**.
2. In the Messaging section highlight **Xpress Mail** and click **Select**.



3. In your Xpress Mail Inbox click **New** to create a new message.
4. In the new email, type in the email address that you want to send the message to, type in the subject, and the body of the message and click **Send**.





## IT Managed

IT-managed email means your company has installed Good Mobile Messaging or Microsoft Direct Push software to enable wireless synchronization of corporate email. You need to have an account established on that server by an IT administrator before you get set up.

**Good™ Mobile Messaging** provides real-time wireless push synchronization of e-mail, calendar, contacts, to-do, and notes for Microsoft Outlook and Lotus Notes. You must have an account on your company's Good Mobile Messaging server. Contact your IT department if you do not have an account. A "Smartphone Connect for Good" data plan must also be activated on your Cingular Wireless account before using Good Mobile Messaging. Set-up instructions for Good will be sent to you via email upon your account activation.

**Microsoft DirectPush** provides wireless access to your corporate Microsoft® e-mail, contacts, calendar and tasks. Your Exchange Admin needs to enable Mobile Services on the Exchange Server. Activate a "Smartphone Connect for Microsoft Direct Push" data plan on your Cingular Wireless account before installing DirectPush.





## Send and Receive Email

1. On the Home Screen, click **Start > Messaging**.
2. In the Messaging section highlight your email program and tab “Select”.
3. In your Inbox click “New” to create a new message.
4. In the new email, type in the email address that you want to send the message to, type in the Subject and body of the message and click “Send”.





## Take a Picture, Send It To a Friend

Taking photos and shooting video clips with audio are easy with your phone's built-in camera.

### Open Camera or Video Recorder

1. Press the CAMERA button on the right side of your phone.
2. To capture photos and video clips, press the CAMERA button once to take a still image.

### Send the photo to your friend

3. From the Camera screen, select **Menu > Pictures and Videos**.
4. Select the picture you want to send.
5. Select **Menu > Send > MMS**.
6. Enter the recipient's wireless phone number.  
You can enter a subject and text as well.
7. Click **Send**.

Steps?

7

Takes?

5 minutes

Tip

You can also download pictures to your PC, check the User Manual for instructions.

Steps?

3

Takes?

5 minutes

## Sync Contacts, Calendar, Email and More (Optional)

With Microsoft ActiveSync, you can synchronize information, such as Microsoft Outlook Contacts, Calendar and Tasks, on your computer and/or a Microsoft Exchange Server with the information on your Cingular 3125.

ActiveSync compares the information on your Cingular 3125 with the information on your computer and/or the server and updates all locations, keeping you up-to-date with the most recent information.

Before you can begin synchronization with your computer, you must install ActiveSync on the computer from the Getting Started CD. ActiveSync is already installed on your Cingular 3125.

### Software Installation



**Warning:** Ensure your phone is NOT plugged in to your computer until AFTER you've completed installing ActiveSync.

1. Close all open programs on your PC before you insert the CD.
2. Insert the CD in your computer.
3. Follow the on-screen instructions to install ActiveSync.

Once you have installed ActiveSync, you will be prompted to connect your phone to the PC.



## Connect your phone to the PC

You will now be in the Get Connected Wizard in ActiveSync. To connect your phone to the PC, use the USB cable included in the box.

Follow the instructions to connect your phone to your PC. This will allow you to select which items you want to synchronize between your PC and phone, such as contacts, calendar, email, favorites and other information.

## Synchronize Information

When you connect your Cingular 3125 to your computer, ActiveSync will immediately synchronize. While your Cingular 3125 is connected, ActiveSync synchronizes every time you make a change on either the computer or the phone.

### 1. Connect your Cingular 3125.

To synchronize local information on the computer, such as Outlook content or media files, connect your Cingular 3125 to the computer through the USB cable or Bluetooth.

### 2. In ActiveSync, click **Sync**.



Steps?

2

Takes?

5 minutes

Steps?

7

Takes?

5 minute

## Play a Song

To play a song, first copy some music to your Cingular 3125 phone. To download the song to your 3125, you will need this:

- Windows Media Player 10 loaded onto your PC. You can download this at [www.microsoft.com/windows/windowsmedia/player/download/download.aspx](http://www.microsoft.com/windows/windowsmedia/player/download/download.aspx).
- Music on your PC in one of these formats: MP3, WMA, AMR-NB, AAC.
- A microSD disk is preferable to copy more than a few songs to your phone.
- ActiveSync software loaded onto your PC. This is included in your CD that came with your phone. Go to the Sync Contacts, Calendar, Email and More section for instructions on how to install ActiveSync. When the "Sync Setup" Wizard opens, click Cancel.

To download music.

1. Open Windows Media Player on your PC.
2. Connect the phone to your PC using the USB cable included in the box. If you have ActiveSync loaded on your PC and the Sync Setup Wizard opens, cancel the window. ActiveSync is needed for the PC to recognize your 3125, but Windows Media Player is the software you use to actually download songs to your 3125.
3. In Windows Media Player 10, click **Library**.



- In the pane on the left, expand the **All Music** category (by clicking the plus sign next to it), and highlight the song you want to copy to your phone.
- Right-click a song that you want to copy, point to **Add to**, and then click **Sync List**. (If the Sync List is displayed, you can also drag and drop files to the list.) The songs are added to the Sync List in the pane on the right.
- At the bottom of the Sync List, click **Start Sync**.



- The song is copied to the phone.

To play items on your phone:

- Press **Start > Windows Media**.
- Press **Menu**, select **Library**.
- Select the My Music, All Music, scroll to the item you want to play, press **Play**.

### Why does my Cingular 3125 not turn on?

The power might be off or the battery might not be charged. See 'Charge the Battery' in the User Manual for more information.

### Why does my Cingular 3125 not charge?

A connection might not be complete. Check that all cables and plugs are fully inserted into ports and power outlets. See 'Charge the Battery' in the User Manual for more information.

The battery might not be inserted properly. Turn off your Cingular 3125 and then remove and reinsert the battery. Verify that the connectors on the battery align with the connectors on your Cingular 3125. See 'Insert the Battery' for more information.

If you connect your Cingular 3125 to the computer to charge, verify that the computer is turned on. If you connect it to the computer using a USB hub, the hub must be self powered to provide enough power to charge your Cingular 3125. If the battery is completely discharged, use the AC charger to charge the battery.

### Why can I not send or receive email messages?

Your Cingular 3125 may not be connected to the wireless network. See 'Make a Phone Call' for more information.

Your Cingular 3125 may not be attached to a supported email address. See 'Set Up Email on your Phone' for more information.

If you still cannot send and receive messages, reset your Cingular 3125 by removing and reinserting the battery. See 'Insert the Battery' for more information.

### How do I use Bluetooth®?

On the Home screen, click **Start > Settings > Connections > Bluetooth** and then select **On** to turn on Bluetooth. To turn off Bluetooth, select **Off**.

Note: To pair with another Bluetooth-enabled device, see "Using Bluetooth" in the User Manual available on the Getting Started CD.



## Why does the Camera screen frequently blacks out with a message that says 'Press the CAMERA button to activate the camera'?

To save battery power, your Cingular 3125 blacks out the screen and displays the notification message when the Camera program is not in use for **2** minutes. To reactivate the Camera screen, simply press the CAMERA button.

## Why can my computer not detect my Cingular 3125?

Verify if Microsoft ActiveSync 4.2 or above is installed on the your computer.

Unplug and reconnect the USB cable.

In ActiveSync on the computer, the **Allow USB connections** check box must be selected in **File > Connection Settings**.

## Why can my Cingular 3125 not synchronize Outlook emails automatically with the Exchange Server?

Verify if the Exchange Server settings have been entered on your Cingular 3125 and are correct.

Verify if Direct Push (  ) is activated in Comm Manager.

Verify if your corporate network is using **Exchange Server 2003 SP2** with Exchange ActiveSync.

Verify if your Cingular 3125 has successfully completed an initial synchronization with Exchange Server via.

You can find more information about ActiveSync connection at:  
<http://www.microsoft.com/windowsmobile/help/activesync/default.aspx>

## PHONE

TO:	DO:
<ul style="list-style-type: none"> <li>Turn speakerphone on and off during a call</li> </ul>	Click <b>Menu &gt; Speakerphone On or Off</b> .
<ul style="list-style-type: none"> <li>Change volume during a call</li> </ul>	Press the <b>Volume</b> button.
<ul style="list-style-type: none"> <li>Switch between Default and Vibrate notification profiles</li> </ul>	Click the <b>Ringer/Vibrate</b> item on the <b>Comm Manager</b> screen.
<ul style="list-style-type: none"> <li>Change phone services settings</li> </ul>	Click <b>Start &gt; Settings &gt; Phone</b> and select the desired phone service(s).
<ul style="list-style-type: none"> <li>Determine if Smartphone is currently within GPRS coverage</li> </ul>	A 'G' icon is displayed on top of the screen.
<ul style="list-style-type: none"> <li>Use the phone while out of the country</li> </ul>	Contact Cingular to enable International voice and data roaming.

## BROWSER

TO:	DO:
<ul style="list-style-type: none"> <li>View a page in full-screen mode</li> </ul>	On a web page, click <b>Menu &gt; View &gt; Full Screen</b> .
<ul style="list-style-type: none"> <li>Change the size of text on web pages</li> </ul>	On a Web page, click <b>Menu &gt; Zoom</b> and select the size you want.

## NAVIGATING SCREEN

TO:	DO:
<ul style="list-style-type: none"> <li>Scroll up/down/left/right on the screen</li> </ul>	Press <b>Up/Down/Left/Right</b> on the 5-way Navigation.
<ul style="list-style-type: none"> <li>Launch a program or select an item</li> </ul>	Press the <b>ENTER</b> button on the 5-way Navigation.

































## TYPING

TO:	DO:
<ul style="list-style-type: none"><li>• Insert a period</li></ul>	Press the <b>1</b> key.
<ul style="list-style-type: none"><li>• Insert a space</li></ul>	Press the <b>⏏/#</b> key.
<ul style="list-style-type: none"><li>• Start a new line</li></ul>	Press the <b>ENTER</b> button.
<ul style="list-style-type: none"><li>• Delete letter(s)</li></ul>	Press the <b>BACK</b> button to backspace and delete a letter; Press and hold the <b>BACK</b> button to backspace and delete entire text.
<ul style="list-style-type: none"><li>• Capitalize a letter</li></ul>	Press the <b>★ T9</b> key to change to the <b>Abc</b> or <b>T9</b> input mode.
<ul style="list-style-type: none"><li>• Capitalize all letters</li></ul>	Press the <b>★ T9</b> key to change to the <b>ABC</b> or <b>T9</b> input mode.
<ul style="list-style-type: none"><li>• Insert symbol</li></ul>	Press and hold the <b>★ T9</b> key and select <b>Symbols</b> , and then select the desired symbol from the list. In T9, press the <b>1</b> key and scroll down.
<ul style="list-style-type: none"><li>• Switch between the input modes</li></ul>	Press and hold the <b>★ T9</b> key and select the input mode you want.

## GENERAL TIP

TO:	DO:
<ul style="list-style-type: none"><li>• Restart the Cingular 3125</li></ul>	Remove the battery, replace the battery and power up the device.
<ul style="list-style-type: none"><li>• Reset the Cingular 3125</li></ul>	Click <b>Start &gt; Accessories &gt; Clear Storage</b> . This will restore your phone to factory settings and you will lose all personal information.





# Status indicators

 full battery power	 GPRS available	 roaming	 ringer off
 low battery power	 GPRS connected	 voice call in progress	 vibrate call alert
 battery very low	 signal strength	 data call in progress	 microphone muted
 charging	 no signal	 call forwarded	 bluetooth
 battery fault	 wireless off	 call on hold	 sync error
 line 1 in used	 new messages	 missed call	 no SIM card
 line 2 in used	 new instant message	 dialing while no SIM card installed	 SIM card fault

# Wireless network coverage

You must connect to the wireless network to begin using many features. To connect to or disconnect from the wireless network, click the **Phone** item on the Comm Manager screen.

Indicators on the Home screen show the wireless coverage level for the area in which you are using your phone. A low level of wireless coverage might limit the use of some device features, as shown in the chart below.

		EDGE	GPRS	GSM
	Full wireless coverage	Emergency calls	•	•
	Full wireless coverage using GPRS	Phone	•	•
	No wireless coverage	SMS messages	•	•
	Wireless is turned off	MMS messages	•	•
		Email messages	•	•
		Browser	•	•
		High-speed data	•	•



# Where can I find more information?

To learn more about using your Cingular 3125, please refer to the User Manual PDF on the Getting Started CD.

Insert the Getting Started CD into the CD drive of your computer to access the User Manual PDF.

## Online Help

A tutorial may be found at:  
[www.cingular.com/tutorials/cingular3125](http://www.cingular.com/tutorials/cingular3125)

## Additional Help

Refer to the ActiveSync USB Connection Troubleshooting Guide at:  
<http://www.microsoft.com/windowsmobile/help/activesync/default.mspix>



Microsoft, MS-DOS, Windows, Windows NT, Windows Server, Windows Mobile, ActiveSync, Excel, Internet Explorer, MSN, Outlook, PowerPoint, and Word are either registered trademarks or trademarks of Microsoft Corporation in the United States and/or other countries.